



## Surface mounted 1-phase track for LED spotlights - 1 m

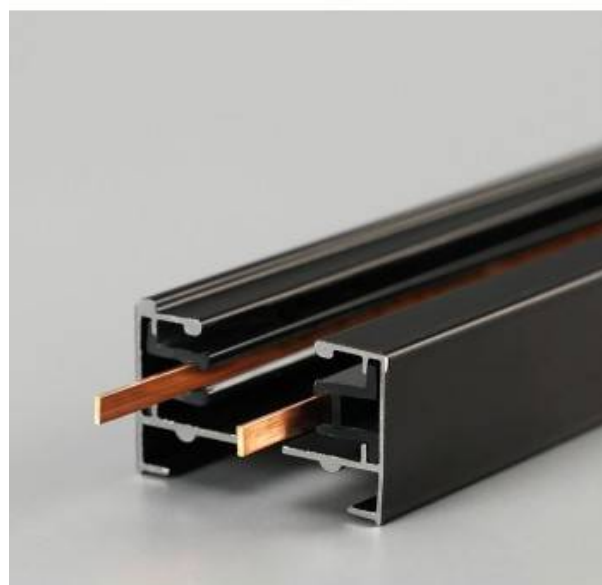
### Ref. BTM-100

100cm 1-phase track, surface-mounted, extruded aluminum (34x21mm)\*\*Including starter and end cap\*\*Single phase220 -240 V1000x34x21IP20



### Product data

Nominal Voltage (V)	220 - 240 V/AC
Dimensions (mm) Lxhx	1000x34x21
Use Outdoor	No
IP	IP20
Certificates	CE, ROHS
Warranty	According to legal guarantee: 2 years
Mounting	Surface, Hanging
Maximum intensity (A)	2.1
Track Type	Monophasic



## Product variants

**Reference**

**Attributes**

BTM-100-B

Colour - White



BTM-100-N

Colour - Black

