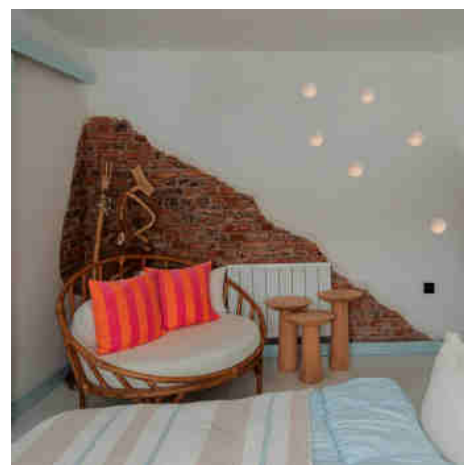


Recessed plaster wall light GU10 "MELON".

Ref. B265

Recessed wall light made of whiteplaster 250x210x78mm for LED GU10 bulbs. For recessed mounting in plasterboard walls. It can be washed and painted in any color for perfect integration into the wall. Ideal for home, restaurants, stores, hotels, etc.**GU10 LED BULB NOT INCLUDED**.



Product data

Nominal Voltage (V)	220-240V/AC
Frequency (Hz)	50-60Hz
Sensor	No
Socket	GU10
Orientable	No
Dimensions (mm) LxIxh	Ø150x210x250x250x78
Material	Plaster
Use Outdoor	No
IP	IP20
Temperature range	-20°C ~ +40°C
Frequency of use	Intensive
Certificates	CE, ROHS
Warranty	According to legal guarantee: 2 years

