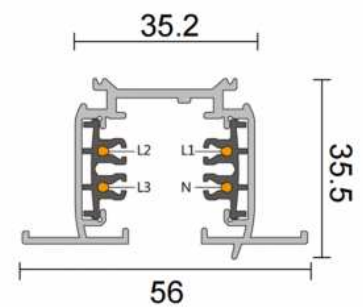


Three-phase recessed track for LED spotlights - 2 meter bar

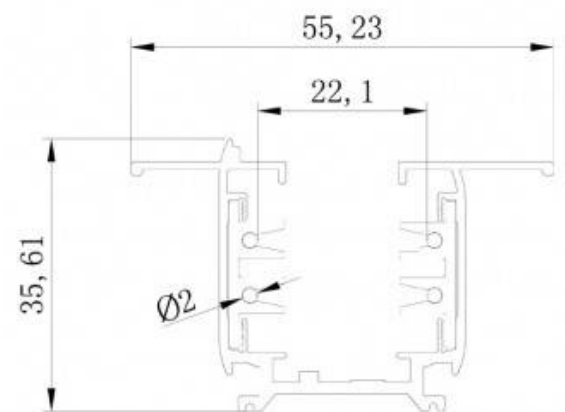
Ref. BTTE-200

2-meter profile of three-phase rail for recessed mounting. Supplied with the necessary accessories for mounting and fixing, the track can be cut to the desired length. The design of the rail incorporates 2 flashing wings that disguise any imperfections that may be in the cut and completely flush against the ceiling. ** Includes starter feeder and end cap. 230VMax. 250W/meter Dimensions: 2000x55x35mm.IP20



Product data

| | |
|-----------------------|---------------------------------------|
| Nominal Voltage (V) | 220 - 250 V/AC |
| Dimensions (mm) LxIxh | 2000x55x35 |
| Use Outdoor | No |
| IP | IP20 |
| Certificates | CE, ROHS |
| Warranty | According to legal guarantee: 2 years |
| Mounting | Recessed |
| Maximum power (W) | 3900 |
| Maximum intensity (A) | 15 |
| Track Type | Triphasic |



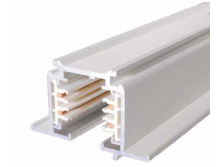
Product variants

Reference

Attributes

BTTE-200-B

Colour - White



BTTE-200-N

Colour - Black

