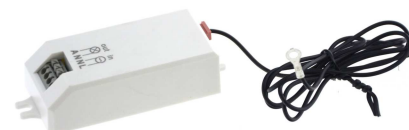




Metallic touch sensor ON/OFF

Ref. SP29C

Metal touch sensor with ON/OFF function. The metal touch sensor is designed with a compact size. The touch sensor can be attached to any metal surface to convert the surface into an on/off touch switch. 220-240V/AC. Max. 800W (LED); 200W (HALOGEN) 50Hz-20~+50°C 74.6x36mm IP20



Datos del producto

IP	IP20
Certificates	CE, ROHS
Warranty	According to legal guarantee: 2 years

