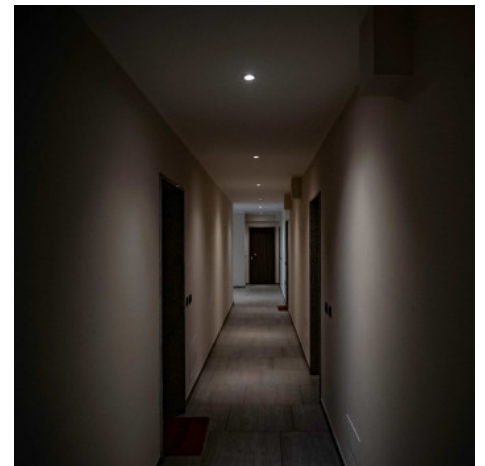


Tilting recessed downlight downlight GU10, MR16 Ø110mm

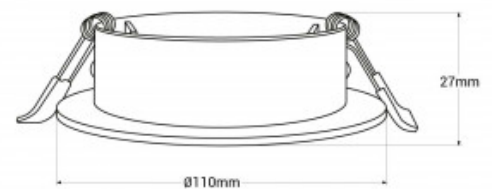
Ref. B986-R

Round recessed polycarbonate ring with dimensions of Ø110x27mm and a cutting diameter of Ø80mm. The tilting system allows directing the light to the desired area. It creates the most suitable atmosphere at every moment. Recessed installation by click, very easy to perform. Finished color to choose between white or silver. After installation is perfectly integrated into the ceiling. Elegant and simple appearance. Perfect for dichroic in portholes with LED bulbs MR16/GU10. *Bulb and socket not included. Ø110x27mm Cut: Ø80mm Recessed



Product data

Socket	GU10/MR16
Orienable	No
Dimensions (mm) LxH	Ø110x27
Material	Polycarbonate
Use Outdoor	No
IP	IP20
Certificates	CE, ROHS
Warranty	According to legal guarantee: 2 years
Cutting dimensions (mm)	Ø80
Mounting	Recessed



Product variants

Reference

Attributes

B986-R-P

Colour - Silver



B986-R-B

Colour - White



B986-R-N

Colour - Matte Black

