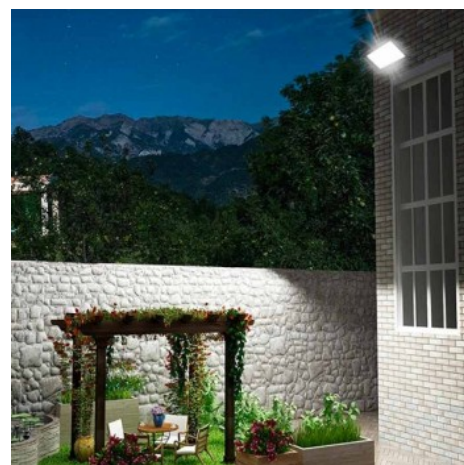




Solar LED projector + solar panel 100W

Ref. SL21-100-BF

Solar LED floodlight with 100W power. Manufactured with compact aluminum housing. Wide beam opening angle of 90°. Color temperature of cold tone, 6500K. Charged during the day to turn on automatically at night. IP65 rated for outdoor use. Light up the garden, home, driveway, garage or deck with this 100W solar floodlight. The remote control is included. With projector dimensions of 240x173.3x40.8mm and solar panel dimensions of 350x450x17mm. 100W6500K90° Remote control included IP65 15Ah



Product data

Kelvin (K)	6500
Lumens (Lm)	780
CRI	70-80
Beam angle (°)	90°
Power (W)	100
Nominal Voltage (V)	3,2V AC
Dimensions (mm) LxHxW	p.Led 240x173.3x40.8mm, p.Led 240x173.3x40.8mm
Use Outdoor	Yes
IP	IP65
Lifetime (h)	25000
Certificates	CE, ROHS

