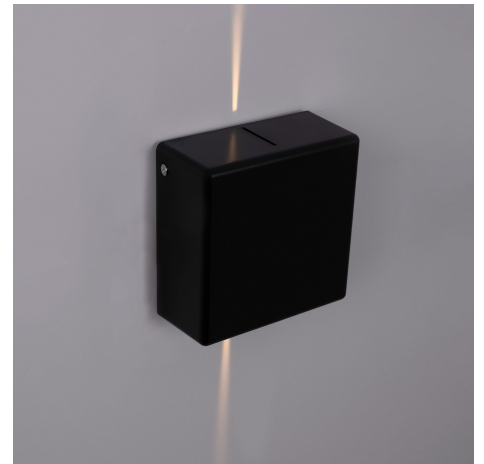


"Karen 2" outdoor square LED wall light - 3W - IP54 - Two-sided light emission

Ref. LN1583-N

Modern and elegant bidirectional wall light, made of high-quality black polycarbonate. It emits light from its upper and lower sides at a narrow angle, providing enveloping and balanced lighting in a warm light (3000K). With a power of 3W and a CRI>90, it accurately reproduces colors with great fidelity.



Datos del producto

Hue	Warm white
Kelvin (K)	3000
Lumens (Lm)	240
CRI	90-95
LED Type	SMD 2835
Dimmable	No
Power (W)	3
Nominal Voltage (V)	220 - 240 V/AC
Sensor	No
Orientable	No
Dimensions (mm) LxLxh	120 x 120 x 50
Material	Polycarbonate
Diffuser material	Polycarbonate
IP	IP54
Lifetime (h)	25000
Certificates	CE, ROHS
Warranty	According to legal guarantee: 2 years
Mounting	Surface

